

UNITED STATES PUBLIC LAND SURVEY CORNER CERTIFICATE FOR

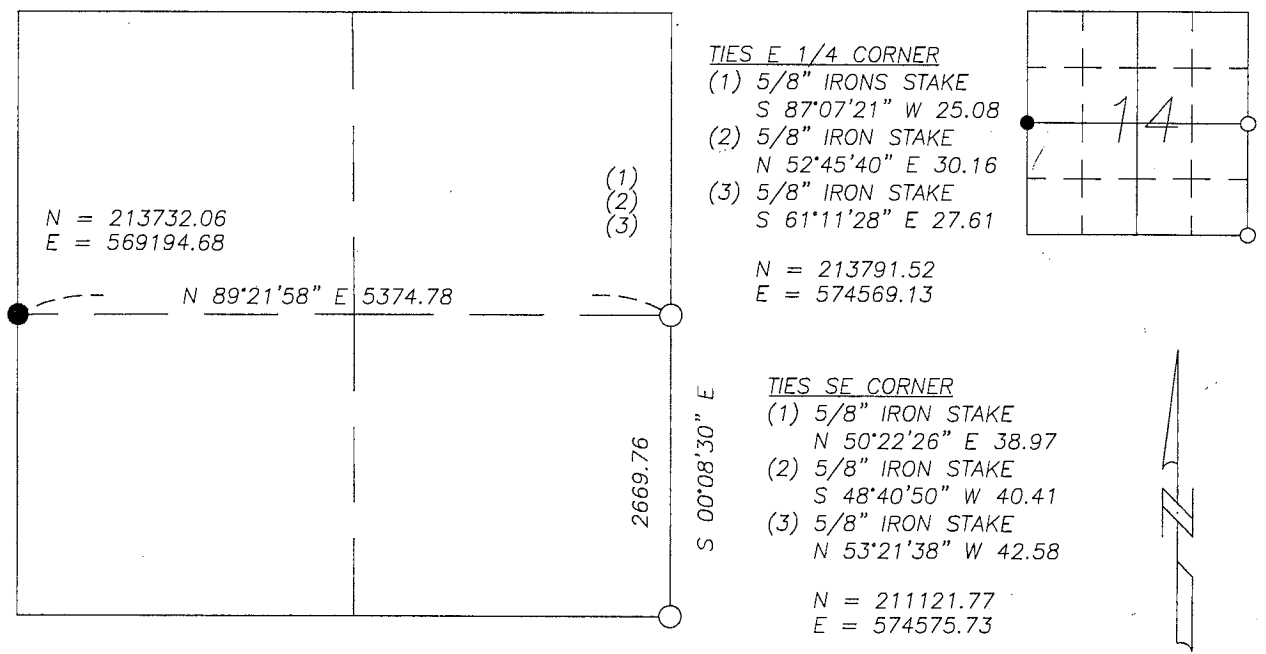
Land survey monuments situated in Section 14, Township 108 North, Range 39 West, of the Fifth Principal Meridian, Murray County, Minnesota..

Previously recorded in N/A in County Recorder's Office.

(Show reason for preparing this certificate, the evidence and detailed procedure used in establishing the corner position & monumentation found or placed.)
 MONUMENT DESCRIPTION AND REMARKS: A request was made to perform a building site survey in the NE

Corner of the SE 1/4 of Section 14. County Highway records indicated that a backhoe was used to search
for E 1/4 corner and SE corner and no evidence of either corner was found. Splitting of fences and road
centerline int. was done by county and highway was built accordingly and P.K. nails were set by county.
After field verification of same and area occupation this practical location on both corners is best evidence
of corners and I accepted the county highway position and set monument with survey cap 23008 at each
corner.

MURRAY COUNTY COORDINATES NAD 83 (2007) PLAN-VIEW



I hereby certify that this land surveying document was prepared and related survey work was performed by me or under my direct supervision and that I am a duly licensed Land Surveyor under the laws of the State of Minnesota.

Perry L. Zieske 6-1-11
 Signature Date

Perry Zieske
 License number 23008

Corners to be Indexed

Corners	Section	Township	Range
E 1/4	14	108	39
SE	14	108	39

RECEIVED JUN 2 2011
James V. Johnson